

1/2" Heavy Duty Hydraulic Regulator

Series 20313

Features

- ▶ Original Shear-Seal® technology
- ▶ Self adjusting
- ▶ High flow capacity
- ▶ Tolerates contaminated media
- ▶ Fail-safe motor control options

Applications

- ▶ BOP Control Units
- ▶ Coiled tube reels
- ▶ Oil and gas systems
- ▶ Pressure sensitive applications



General Specifications*

Pressure: Supply/Inlet Pressure:	5,000 psi (345 bar)
Regulated Pressure Range: High Sensitivity Full Range	300 - 1600 psi (21 -110 bar) 300 - 3000 psi (21 - 207 bar)
Media:	Hydraulic oil or lubricated water
Fluid Temperature Range:	-30° to +250°F (-40° to +121° C)
Proof Pressure:	7,500 psi (517 bar)
Flow: Flow Rate:	45 GPM (@ 50/ft/s)
Cv Inlet:	6.7
Cv Vent:	6.7
Porting: Inlet:	1/2" NPT Standard, SAE Option
Outlet:	1/2" NPT Standard, SAE Option
Vent:	1/2" NPT Standard, SAE Option
Bleed Port:	1/4" Dia. hole

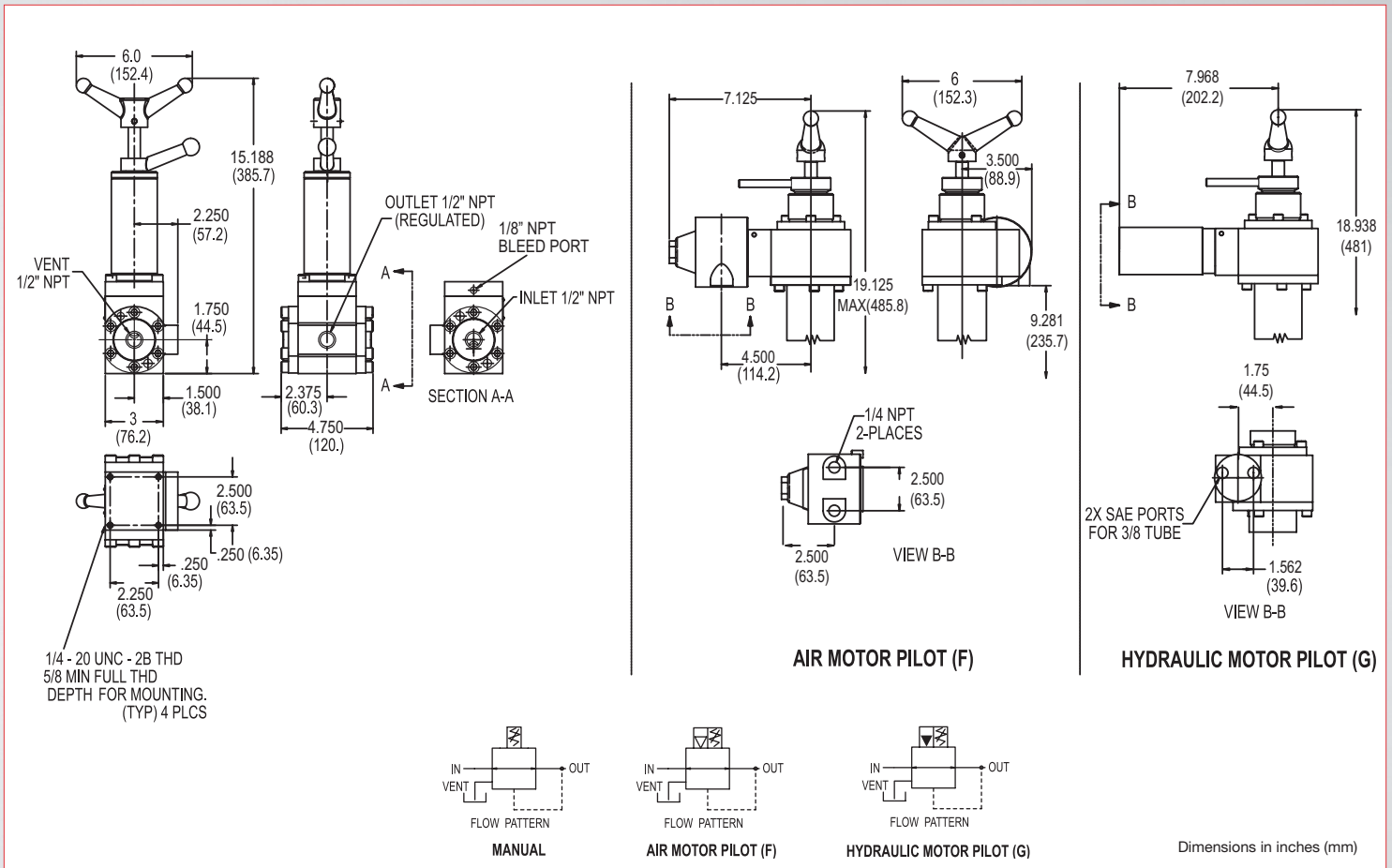
Materials of Construction: Body:	Stainless steel (standard)
Flanges:	Stainless steel (standard)
Spring Tower Housing: Manual Pneumatic Motor model Hydraulic Motor model	Phosphate coated alloy steel (std.) Phosphate coated alloy steel (std.) Phosphate coated alloy steel (std.)
Standard O'ring Material:	Buna N
Socket Head Screws:	Stainless steel (standard)
Wetted Parts:	Stainless steel
Pneumatic Pilot Motor ("F" prefix): Pilot Motor Working Pressure:	60 - 100 psi (4.1 - 6.9 bar)
Porting A & B:	1/4" NPT
Operating Temperature Range:	32° to +250°F (0° to +120°C)
Hydraulic Pilot Motor ("G" prefix): Pilot Motor Working Pressure:	400 - 1600 PSI (6.9 - 110 bar)
Porting A & B:	SAE for 3/8" Tube (Size -6)
Operating Temperature Range:	-40° to +250°F (-40° to +121°C)
Approximate Shipping Weight: Manual:	21 lbs. (9.5 kg)
Pneumatic or Hydraulic Motor:	44 lbs. (20.0 kg)

* See product configurator for additional options.

1/2" Heavy Duty Hydraulic Regulator

Series 20313

Technical Drawings



Product Configurator

Example:

Option

Blank	NPT porting
-MS	SAE porting

Adjustment Method

Blank	Manual
F	Pneumatic failsafe motor
G	Hydraulic failsafe motor

Regulated Pressure Range

Blank	High sensitivity	300 - 1600 psi (21 - 110 bar)
-1	Full range	300 - 3000 psi (21 - 207 bar)

Series

20313S6WQ2	1/2" Shear-Seal® Regulator
------------	----------------------------

